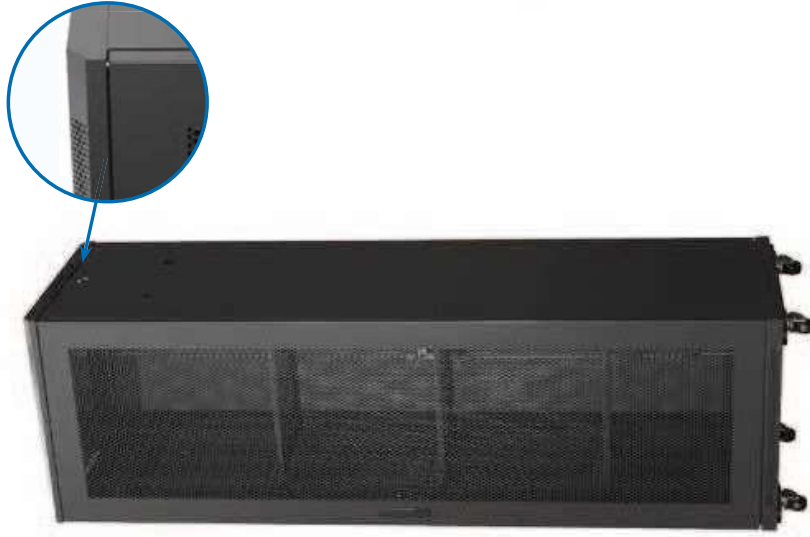


Our 19" rack are following EIA310-D/E or equivalent

KA SERVER CABINETS

MAXIMUM STATIC LOADING CAPACITY
1200KG



ACTUAL THICKNESS

Vertical mounting rails	2.2	mounting beam	1.7	Frame	1.4	Front door	1.4	Rear door	1.4	Side panel	1.2
-------------------------	-----	---------------	-----	-------	-----	------------	-----	-----------	-----	------------	-----

STANDARD

Comply with EIA-310-E, IEC297-2, DIN41491 PART1, DIN41494 PART7, GB/T3047.2-92 standard, compatible with ETSI standard.

FEATURES

- Various sizes and parts are available according to different application demand.
- Welded frame, demountable structure design, light duty but sturdy and flexible.
- Closed-cable routing at top and bottom panel, according to project request, customized big cable entrance at bottom is available on demand.
- Embedded side panel, tool free in assembling and dismantling, lock is optional.
- Front door and rear door can be interchanged quickly without tools, opening angle 180°, convenient for equipments installation and maintenance.
- Rotary door handle, keys are universal to front and rear doors for all KA series cabinets.
- Providing several copper grounding stud.
- Complete accessories.
- Provided with adjustable feet, maximum static loading is 800kgs.
- Plinth is optional in order to fix the cabinet for bottom cable routing, cooling and anti-rats.
- Surface treatment procedure is degreasing->pickling->anti-rust and phosphorization->water cleaning->powder coating, RoHS compliant.



Several cable input panels meets different location cable routing request.



Quick opening latch structure, reversible door. The opening angle of the cabinet door is greater than 180 degrees.



Adjustable steel tray, 150kg maximum loading



Trapezoid section mounting beam



Spring Lock

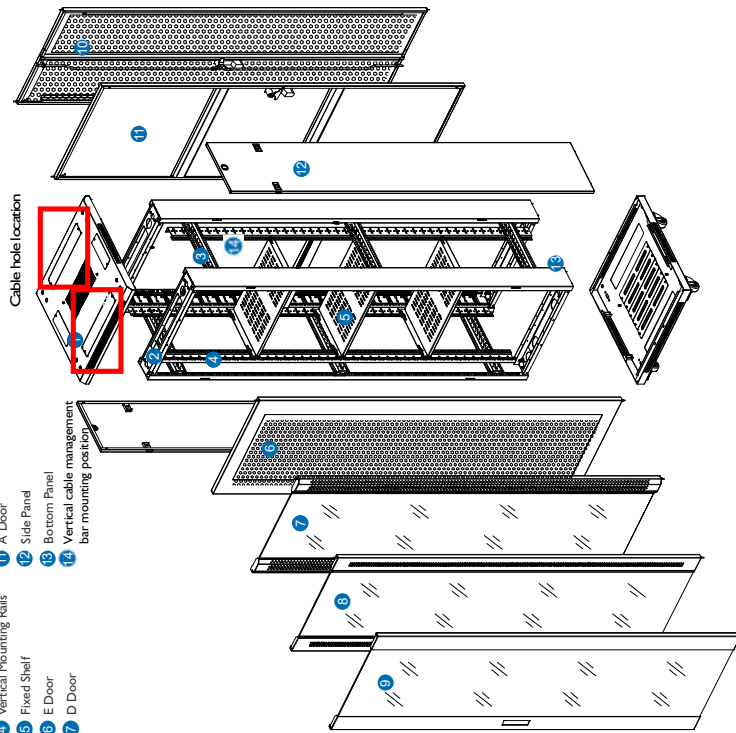


Fan units for dissipate heat

KA SERIES 600 WIDE CABINET

- 1 Top Panel
- 2 Frame
- 3 Mounting Beam
- 4 Vertical Mounting Rails
- 5 Fixed Shelf
- 6 E Door
- 7 D Door

- 8 C Door
- 9 B Door
- 10 F Door
- 11 A Door
- 12 Side Panel
- 13 Bottom Panel
- 14 Vertical cable management bar mounting position



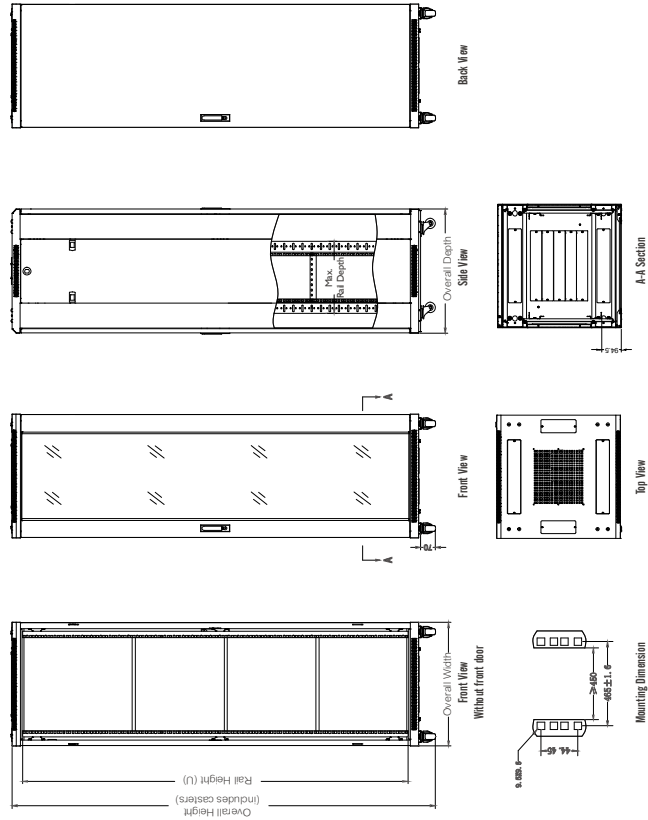
Moveable bottom panel for easy cable management

Detachable side panels, can be locked. U height indicator vertical rail.

Main Parts:

S/N	Part Name	Quantity	Unit	Material	Surface finish	Remark
1	Top panel	1	Piece	SPCC cold rolled steel t1.2	powder coated	***
2	Bottom panel	1	Piece	SPCC cold rolled steel t1.2	powder coated	***
3	Frame	2	Piece	SPCC cold rolled steel t1.2	powder coated	***
4	Mounting beam	6	Piece	SPCC cold rolled steel t1.5	powder coated	4pcs for lower 37U
5	Vertical mounting rails	4	Piece	SPCC cold rolled steel t2.0	powder coated	***
6	Front door	1	Piece	***	powder coated	***
7	Rear door	1	Piece	***	powder coated	***
8	Side panel	2	Piece	SPCC cold rolled steel t1.0	powder coated	***
9	Spring lock	2	Piece	Zinc alloy	Black	With 2 keys
10	Fixed shelf	3	Piece	SPCC cold rolled steel t1.2	powder coated	1ps for lower 37U
11	Heavy duty castor	4	Piece	***	***	2"
12	M12 adjustable feet	4	Piece	***	***	***
13	Fan unit	4	Piece	***	***	Depth of 600 mm, 2 pieces
14	8 outlet standard socket	1	Piece	***	***	***
15	M6 Cage Nuts and Screws	40	Set	***	***	20sets for lower 37U
16	Floating nut hook	1	Piece	***	***	***
17	Allen Key	1	Piece	***	***	***

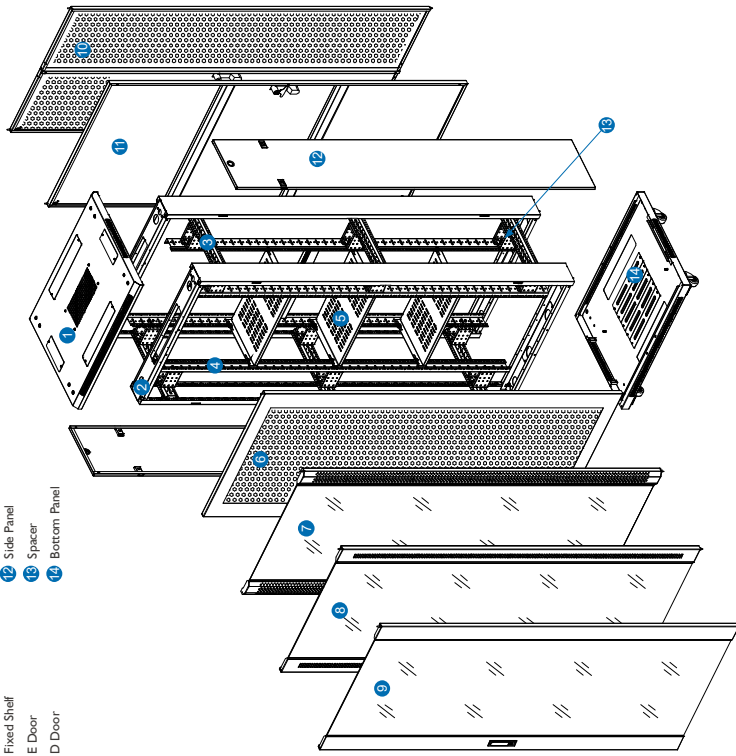
Main Dimension:



- 1 Top Panel
- 2 Frame
- 3 Mounting Beam
- 4 Vertical Mounting Rails
- 5 Fixed Shelf
- 6 E Door
- 7 D Door

- 8 C Door
- 9 B Door
- 10 F Door
- 11 A Door
- 12 Side Panel
- 13 Spacer
- 14 Bottom Panel

KA SERIES 800 WIDE CABINET



U marking is still visible after mounting equipments.

Adjustable Mounting rails & Spacer

Moveable bottom panel for easy cable management



ONE-STOP MANUFACTURER OF HIGH CLASS DATA CENTER INFRASTRUCTURE

District A Huangjiahu Industrial zone,
Yuyao City, Zhejiang Province, China.
Web Site: en.lepinnet.com

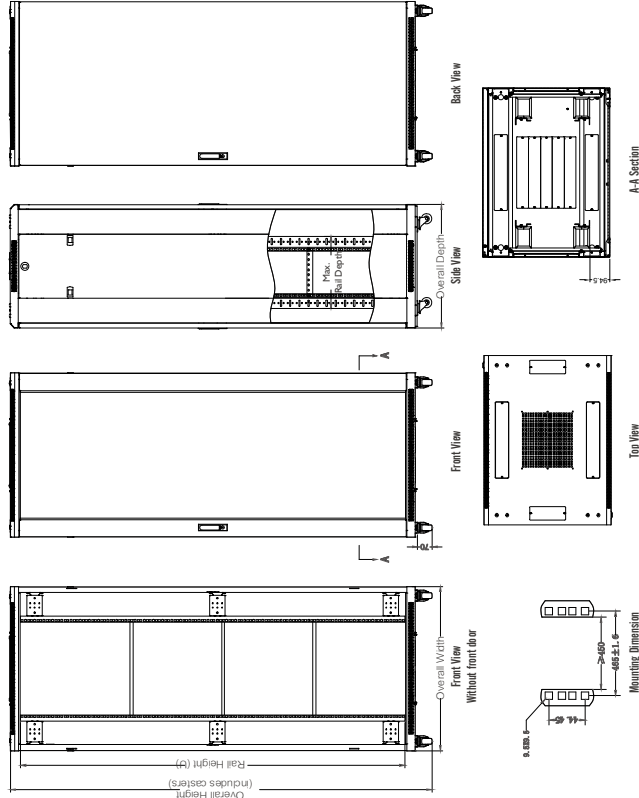


Tel: 86-574-5822595
Fax: 86-574-6203097
E-mail: sales@lepinnet.com

Main Parts:

S/N	Part name	Quantity	Unit	Material	Surface finish	Remark
1	Top panel	1	Piece	SPCC cold rolled steel t1.2	powder coated	
2	Bottom panel	1	Piece	SPCC cold rolled steel t1.2	powder coated	
3	Frame	2	Piece	SPCC cold rolled steel t1.2	powder coated	
4	Mounting beam	6	Piece	SPCC cold rolled steel t1.5	powder coated	4pcs for lower 37U
5	Vertical mounting rails	4	Piece	SPCC cold rolled steel t2.0	powder coated	
6	Front door	1	Piece	SPCC cold rolled steel t1.0	powder coated	
7	Rear door	1	Piece	SPCC cold rolled steel t1.0	powder coated	
8	Side panel	2	Piece	SPCC cold rolled steel t1.0	powder coated	
9	Spring lock	2	Piece	Black	Black	With 2 keys
10	Spacer	12	Piece	SPCC cold rolled steel t1.5	powder coated	8pcs for lower 37U
11	Fixed shelf	3	Piece	SPCC cold rolled steel t1.2	powder coated	1pcs for lower 37U
12	Heavy duty castor	4	Piece			2"
13	M12 adjustable feet	4	Piece			Depth of 600mm, 2 pieces
14	Fan unit	4	Piece			
15	8 outlet standard socket	1	Piece			
16	M6-Cage Nuts and Screws	40	Set			20sets for lower 37U
17	Floating nut hook	1	Piece			
18	Allen Key	1	Piece			

Main Dimension:



ONE-STOP MANUFACTURER OF HIGH CLASS DATA CENTER INFRASTRUCTURE

District A Huangjiahu Industrial zone,
Yuyao City, Zhejiang Province, China.
Web Site: en.lepinnet.com



Tel: 86-574-5822595
Fax: 86-574-6203097
E-mail: sales@lepinnet.com

KA-SERIES DOOR STYLE



A Steel door



E Glass door with frame with ellipse hole



C Glass door with frame with ellipse hole



B Glass door with frame with round hole



E Perforated door with hex hole



F Two sides open perforated door with hex hole

Ordering Information:

Model No	Capacity (U)	Width (mm)	Depth (mm)	Height (mm)	Packing Dimension			Volume (CBM)
					Width	Depth	Height	
KA6618	18	600	600	988	630	630	1000	0.40
KA6818		600	800		630	630	1000	0.52
KA6622	22	600	600	1166	630	630	1180	0.47
KA6822		600	800		630	630	1180	0.62
KA6627	27	600	600	1388	630	630	1400	0.56
KA6827		600	800		630	630	1400	0.73
KA6632	32	600	600	1610	630	630	1620	0.64
KA6832		600	800		630	630	1620	0.85
KA6637		600	600		630	630	1840	0.73
KA6837	37	600	800	1833	630	630	1840	0.96
KA6037		600	1000		630	630	1840	1.19
KA6237		600	1200		630	630	1840	1.43
KA6642		600	600		630	630	2070	0.82
KA6842		600	800		630	630	2070	1.08
KA6042		600	1000		630	630	2070	1.34
KA6142		600	1100		630	630	2070	1.47
KA6242		600	1200		630	630	2070	1.60
KA8842	42	600	600	2055	630	630	2070	1.08
KA8042		800	800		830	830	2070	1.43
KA8142		800	1000		830	830	2070	1.77
KA8142		800	1100		830	830	2070	1.94
KA8242		800	1200		830	830	2070	2.11
KA6647		600	600		630	630	2290	0.91
KA6847		600	800		630	630	2290	1.20
KA6047		600	1000		630	630	2290	1.49
KA6147		600	1100		630	630	2290	1.63
KA6247		600	1200		630	630	2290	1.77
KA8847	47	600	600	2280	830	830	2290	1.20
KA8047		800	800		830	830	2290	1.58
KA8147		800	1000		830	830	2290	1.96
KA8147		800	1100		830	830	2290	2.15
KA8247		800	1200		830	830	2290	2.34

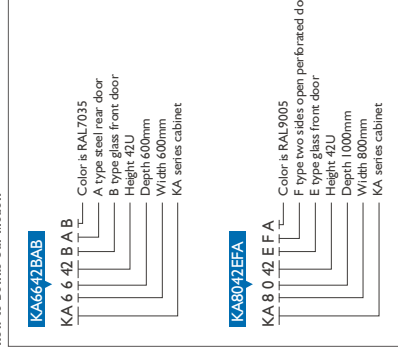
Front & Rear door definition

000000A00	Steel door
000000B00	Glass door with frame
000000C00	Glass door with frame with ellipse hole
000000D00	Glass door with frame with round hole
000000E00	Perforated door with hex hole(72%/75%)
000000F00	Two sides open perforated door with hex hole(70%/74%)

Other definition

00000000A	Black RAL9005
00000000B	Gray RAL7035
00000000C	Black RAL9005 Empty cabinet
00000000D	Gray RAL7035 Empty cabinet
00000000E	Black RAL9005 Knock down packaging
00000000F	Gray RAL7035 Knock down packaging
00000000G	Black RAL9005 Empty cabinet knock down packaging
00000000H	Gray RAL7035 Empty cabinet knock down packaging

How to Define Our Model:



ONE-STOP MANUFACTURER OF HIGH CLASS DATA CENTER INFRASTRUCTURE

District A Huangjiahu Industrial zone,
Yuyao City,Zhejiang Province,China
Web Site: en.lepinnet.com



Tel: 86-574-5825295
Fax: 86-574-62030297
E-mail: sales@lepinnet.com

ONE-STOP MANUFACTURER OF HIGH CLASS DATA CENTER INFRASTRUCTURE

District A Huangjiahu Industrial zone,
Yuyao City,Zhejiang Province,China
Web Site: en.lepinnet.com



Tel: 86-574-5825295
Fax: 86-574-62030297
E-mail: sales@lepinnet.com